

ECS Imaging Newsletter



✦ ✦ Celebrating 20 Years of Excellence

January 2010
[View Newsletter Online](#)

Volume VIII Issue I



[News](#)

[Spotlight](#)

[Events](#)

[Webinars](#)

[Tech Tips](#)

[About ECS](#)

[Web Home](#)

*Your ECS Imaging
Account Managers*

Debbi Bodewin
Bob McCowan
Pete Herschelman
Rod Simon
Barry Weinstein
Ed Althof
Tim McGrath
Steve Walter

[News – Happy New Year 2010,
LF in the News](#)

[Spotlight – ECS Imaging’s 20th
Year!](#)

[About ECS and Product Demos](#)

[Events – Upcoming Shows](#)

[Tech Tips – New Features](#)

[January Webinars – Best
Practices, Product Demos](#)

Laserfiche Wins Buyers Lab “Pick of the Year” Award

December 8, 2009—Long Beach (CA)—Laserfiche today announced that it has won a Buyers Laboratory Inc. (BLI) “Pick” award for Outstanding Enterprise Document Management. The “Pick” awards give special recognition to the hardware and software products that provide the most outstanding performances in BLI’s exhaustive lab tests.

“Deploying a robust, easy-to-use document management system is one of the surest ways for an organization to streamline everyday tasks and improve efficiency among knowledge workers,” said BLI Managing Editor Daria Hoffman. “Laserfiche is a unified, five-star document management solution designed to address complex business needs.”

Laserfiche earned BLI’s highest possible rating: 5 stars overall. It also earned top marks in 9 of the 11 categories BLI evaluated. “We were especially impressed with the platform’s feature set, security, ease of use and value,” noted BLI Assignments Editor George Mikolay.

“2009 has been a great year for Laserfiche, with positive recognition from IDC, USC and now BLI—not to mention our extensive customer base,” said Laserfiche Senior Vice President Chris Wacker. “A Buyers Lab ‘Pick’ is a hard-earned award that buyers can trust to guide them in their purchase decisions, and we’re pleased to have such a strong endorsement from this respected testing lab.”

Happy New Year's from ECS to you!



Tech of the Year Award Goes To...



Jesse Martinez

Outstanding Tech for technical knowledge, implementation and customer service.
Employed with ECS since 2007. Recent quotes from customers:

"I would also like to say that Jesse's assistance this morning was very helpful; Jesse is a pleasure to work with." Sue Martin - Riverside County Human Resources

"Jesse was extremely helpful and professional. He resolved the problem and provided some additional administrative training." Jeff Collins - Antioch USD

NOMINATED BY
JIM PAPPAS
ECS IMAGING-CEO



ECS Celebrates 20 Years!

A Happy New Year and Many Thanks for 20 Years of ECS Imaging, Inc.

ECS has been blessed by the more than 200 plus customers over the 20 years of existence of the company. It seems like yesterday that I started ECS to be a network and hardware resource for small business. As the Hardware side and the network side were subsiding we looked for an application to build on. My experience with Honeywell and Compagna Bull of France with the technologies of Storing and retrieving images seemed to fit the new technologies striving to go mainstream. In this area, one of my past friends in Texas had developed an Imaging system for Oil and transportation companies. This was in 1993. In the winter of 1994 we had played with selling FileMagic, and Liberty. We got beat out by a competitor who had just written a new version of their Imaging system, Laserfiche. Then the plot thickens as we started to grow with Laserfiche. From there on we were constantly reminded of the strength of providing responsible and continuous support to our loyal customers. With 2009 over, we can all breathe a sigh of relief. Whether we are Government, or Commercial we all suffered. The revenues were down, the needs remained great and ECS tried to make every effort to keep prices down and to deliver quality support to each and every one of our customers.

Looking forward to 2010 seems to be a year where we all will continue to be concerned with the economy, and with the need to utilize our resources effectively. ECS is dedicated to assist each and every one of it's customers with whatever we can do. Let's look forward to a good prosperous new Year.

Thank you all for all 20 years. Debbi and I look forward to serving all of you during 2010.

Sales Team



Tech Team



Scanning Team



Events

TOP



We are currently scheduling our 1st Quarter User Groups For both Northern and Southern CA. If you are interested in being a host location please let us know.

Visit the ECS booth at these upcoming Conferences we support.

Tuesday, January 19: CAPPO in Riverside
Starting Sunday, January 31: NAHRO Conference in Napa

Webinars

TOP



[Click here](#)
to join our weekly
LincDoc Webinar

E-Forms Solution Integrated with Laserfiche

With LincWare you can skip the scan and paper process altogether!

The Paper Pushing Problem:

The Internet has provided organizations with countless time-saving measures. Online users can now access vital information on taxes, city services, official announcements, events, licenses, real estate and construction in only a few clicks. Still, interacting with governments and organizations remains heavily based on downloading static PDF forms and hand delivering or faxing them to the appropriate department.

Building permit requests, grant applications, dog licenses, job applications, event permits, business permit applications, exemption applications, employee forms, records requests, and countless more services, require manual forms processing.

Our Simple Solution:

With this solution we are providing an intuitive front end for processing complex forms, in

a digital format to Laserfiche thus enhancing your document lifecycle management. And with the software's ability to automatically complete Laserfiche template field data when the form is filled out, it improves your efficiency and eliminates the need for you to scan paper forms into Laserfiche. The forms are automatically filed into Laserfiche at the time they are filled out.

Each LincDoc version simultaneously populates Laserfiche template fields and 3rd party databases upon the completion of any eForm or document, eliminating redundant entry, scanning and storage steps.

LincDoc's document automation and eForms software can make the information submittal and approval process a breeze.

Tech Tips

TOP



Empower!

Visit the Laserfiche Support and User Information [Site](#)

Resources available 24 hours a day on this Support Site.



[Laserfiche Achieves DoD 5015.2-STD Version 3 Records Management Certification](#)

[Web Access 8.1 New Features: E-mail Pages, In-Document Search URLs and Quick Print](#)



Laserfiche Achieves DoD 5015.2-STD Version 3 Records Management Certification

December 15, 2010—Laserfiche today announced that it has renewed its records management certification with the DoD 5015.2-STD version 3 standard. Furthermore, Laserfiche has extended the certification beyond electronic records management to include physical records management through integration with technology provided by Infolinx, a Laserfiche Professional Developer Program partner.

“This certification, which involves rigorous testing, has become the de facto standard for records management applications,” said Tom Wayman, Laserfiche vice president of product strategy. “With our software’s expanded functionality, Laserfiche now has more certified components than any other vendor, offering our customers more choice, power and flexibility than any other solution on the market.”

The new certification includes integrated physical records management through Infolinx, which brings physical records management features such as barcode and RFID tracking, space management, inventory reconciliation and online requesting and transferring of records to Laserfiche.

“The need for transparency and accountability continues to drive the adoption of DoD 5015.2-certified records management systems across all industries,” said Wayman. “The extension of our certification to include physical records management is of great value to our customer base.”

Version 8 Products

- Client-Server 8.1
- Snapshot
- Email
- Workflow
- Audit Trail
- Records Manager
- Web Access
- Plus
- Toolkit
- Weblink
- Quick Fields
- Avante/ Rio Named User system
- Agenda Manager & Processor

Coming Soon

- Import Agent

Web Access 8.1 New Features: E-mail Pages, In-Document Search URLs and Quick Print

Web Access 8.1 improves your ability to work with your documents, share documents and manage your repositories with the addition and/or enhancement of several features. In this Tech Tip, we'll explore three of them: e-mail pages, in-document search URLs and Quick Print.

E-mail Pages

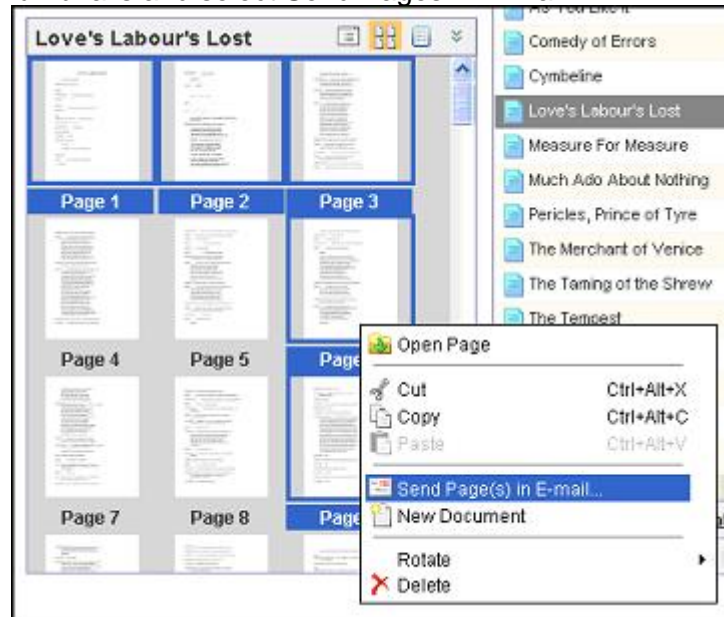
With Web Access 8.1, we have given users greater flexibility when e-mailing documents, allowing you to select individual pages from a Laserfiche imaged document to include with your message.

Note: You cannot e-mail individual pages of an electronic document.

To e-mail a page or pages from an imaged document:

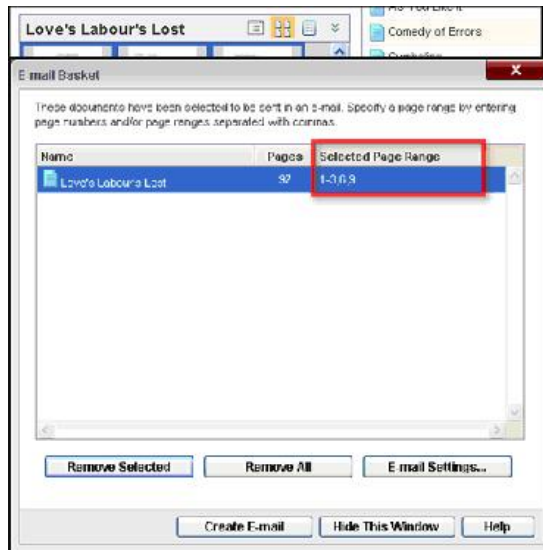
Display the document's thumbnails in either the Preview Pane or the Document Viewer. Select the thumbnails of the pages you want to e-mail. To select more than one page, hold CTRL while selecting thumbnails.

Right-click the thumbnails and select Send Pages in E-mail.



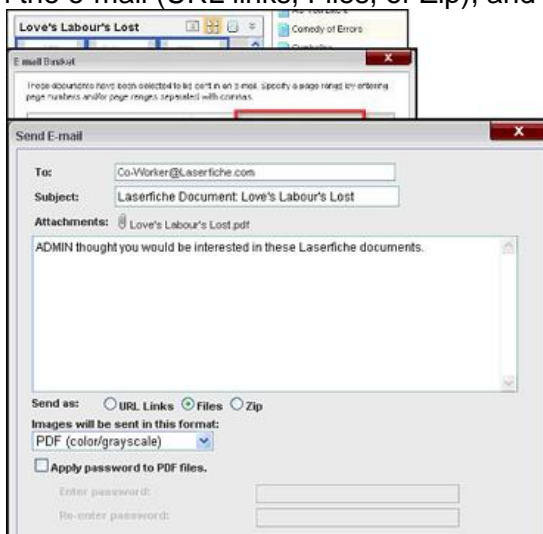
Note: The **Send Pages in E-mail** option is available only if the settings in the **E-mail** section of the Web Access Configuration Page have been configured.

In the **E-mail Basket** dialog box, verify that the page numbers listed under the **Select Page Range** column match the pages you selected. If not, click the column and type the numbers of the correct pages. The range can consist of consecutive pages (e.g., 3-11) or non-consecutive pages (e.g., 1,5,9,67).



Click **Create E-mail**.

In the **Send E-mail** dialog box, enter the recipient's e-mail address in the **To** field. If necessary, change the subject header and/or e-mail message. Specify how the pages should be included with the e-mail (**URL links**, **Files**, or **Zip**), and click **Send**.



In-Document Search URLs

In addition to being able to share URL links to a specific entry or to repository-wide search results, users can now use URLs to share results for text searches performed within a specific document. For example, John searches within a sales record for the company name "Castle Industries," and he wants to share the results with his co-worker, Karen. If John and Karen have access to the same repository (as well as appropriate security rights), he can copy the URL and send it to Karen, who will be directed to the document and the corresponding search results when she pastes the URL in her Internet browser.

You can also create your own in-document search URLs using the following syntax structure:

http://servername/laserfiche8/index.aspx?db=database#id=id;view=pages;find=searchquery

To complete the URL, replace **servername** with the name of the server where Web Access is installed, **database** with the name of your Laserfiche repository, **id** with the document's entry ID number, and **searchquery** with the search term you want to find.

Quick Print

Users with Adobe Reader installed on their computers can now print Laserfiche documents from Web Access more easily with the new **Quick Print** tool. In Web Access 8.0, printing a document took four steps: export as PDF, save it, open it and click Print. **Quick Print** condenses these steps by exporting and opening the document with one click. From there, users can print using Adobe Reader's print options.

Note: Quick Print can only be used with Laserfiche documents with fewer than two watermarks, and it cannot be used with electronic documents.

To use Quick Print

Make sure you have added the **Quick Print** tool to the Folder Browser or Document Viewer toolbars.



Select or open the document you want to print.

Click **Quick Print** and use the Print option in the new window that opens.

[Top of Tech Tips](#)

Contact Info

877.790.1600

Web: www.ecsimaging.com

Sales Inquiry:

sales@ecsimaging.com

Tech Support:

support@ecsimaging.com

Locations

Southern CA

3720 Sunnyside Dr. Ste.200

Riverside, CA 92506

Tel: 951.787.8768

Fax: 951.787.0831

Northern CA

4737 Imhoff Pl Unit 1B

Martinez, CA 94553

Tel: 925.370.2456

Our Services

- Scanning Services
- Microfiche/Film/Aperture Card Conversions
- E-Forms
- Digital Signatures
- Hosted WebLink
- Custom Programs: Case# Generator, Mug Shot Capture, Six-Pack Creator, Barcode Coversheet Automation
- Custom Integrations: ESRI, Permits Plus, CRW, H.T.E., Navision, Eden, Munis, Oracle, DataTel, PeopleSoft, Digital Recorder Importer
- Turn-key Implementations

Our Business Partners

Software



Document Management Software

Integrations With Laserfiche



LincDoc eForms Creation & Automation



Agenda Manager Integration



ESRI Integrations



Free 15-minute webinar

Digital Signatures



Email & Data Encryption



THE POWER OF PROOF

View Demo

Sealed & Time Stamped Data Authentication



Court Case Management Integration



SharePoint and Office Integrated

Scanning and Capture Technologies



Kofax Virtual ReScan Software



Elite Channel Partner



Premier Partner
Product videos click [HERE](#)



E-size/Map Scanners



Advanced Capture Solution ICR & Forms Processing



Check Scanning & Remittance Processing Integration