

ECS Newsletter

"Your Source for Document Management News"

OCTOBER 2008

Inside this Issue

Volume VI, Issue X



[View Newsletter Online](#)

News

Spotlight

Events

Webinars

On Demand Videos

Tech Tips

About ECS

Web Home

Prize Winners



Visioneer XP300 scanners

1. **Dianna Miller**
City of Santa Paula PD
2. **Andrea Baldwin**
Amador Water Agency



1. **Sue Tearpak**
Amador Water Agency
2. **Thomas Reinhart**
Crestwood Behavioral Health
3. **Ariel Cecena**
Imperial County Office of Education
4. **Mark Mikolaj**

News – ECS 6TH Annual Customer Conference Recap

Events- Upcoming shows and Events

Spotlight – City of Lynwood

Tech Tips –Getting Ready for Version 8, Version 8 New Features

On Demand Videos - See a demo when you want!

October Webinars – Best Practices, Product Demos

ECS 6th Annual Customer Conference Success! *We greatly appreciate everyone who was able to attend our Annual Conference*

ECS Staff

We thoroughly enjoyed our 6th Annual Customer Conference held September 10-12, 2008 at the Harrah's Hotel and Casino in Lake Tahoe, NV



Survey results

Top 3 classes on Thursday:

1. Administration Console with Michelle Waddell
2. Laserfiche BACKUP and ARCHIVING with Jason Goddard
3. Discussion on Workflow within Laserfiche and Sharepoint with Steve Hackney



Top 2 Locations for next years Conference:

1. Long Beach
2. Orange County

Oldest Customers of Laserfiche:

1. Riverside County Human Resources
2. Los Angeles office of Education
Chris Wacker, Nien-ling Wacker and Jim Pappas



NOMINATED BY
ED ALTHOF

ECS Imaging
Account Managers

[Debbi Richards](#)
[Bob McCowan](#)
[Pete Herschelman](#)
[Rod Simon](#)
[Barry Weinstein](#)
[Ed Althof](#)
[Tim McGrath](#)



City of Lynwood Receives The Certificate of Recognition from ECS Imaging, Inc

<http://www.ecsimaging.com/weblink.php> Jamel Goodloe (Left) and Daniel Baker (Right) accepting The Certificate of Recognition from ECS. The idea of the MYDOCSPOT public records website was created by Administrative Analyst, Daniel Baker, IT Technician, Mike Ochoa, and Graphic Technician, Jamel Goodloe did the initial art work and design of the pages.



Based on their input ECS reworked the pages into ASP pages, added the Spanish pop-ups, and integrated them with Weblink.



[Click on this link to see the custom Weblink preview](#)

Events

TOP



***We look forward to seeing our customers
and supporting your organizations
at these upcoming Conferences!
Say hello at the ECS booth.***

MISAC – Rancho Mirage, October 20-21 2008

CLEARs – Burlingame, October 20-23, 2008

CCISDA- Sacramento, November 3-5, 2008

CEPTA - Sacramento, November 20-21, 2008

**Friday Nov. 20th ECS will be Speaking at this Event on the
Utilization of Workflow with Sharepoint. 9:30am - Baker Room Level 3**

Webinars

TOP

[Thursday, Oct 16, 2008](#)
[11:00 AM PST](#)

[Register](#)

18 Minutes To More Intelligent Searching

How much time do you waste each day trying to find the information you need? In just 18 minutes, learn how a digital document management system will help you recover this lost time—and make you far more productive.

[Wednesday, Oct 8, 2008](#)
[9:00 AM PST](#)

[Register](#)

Document Management 101

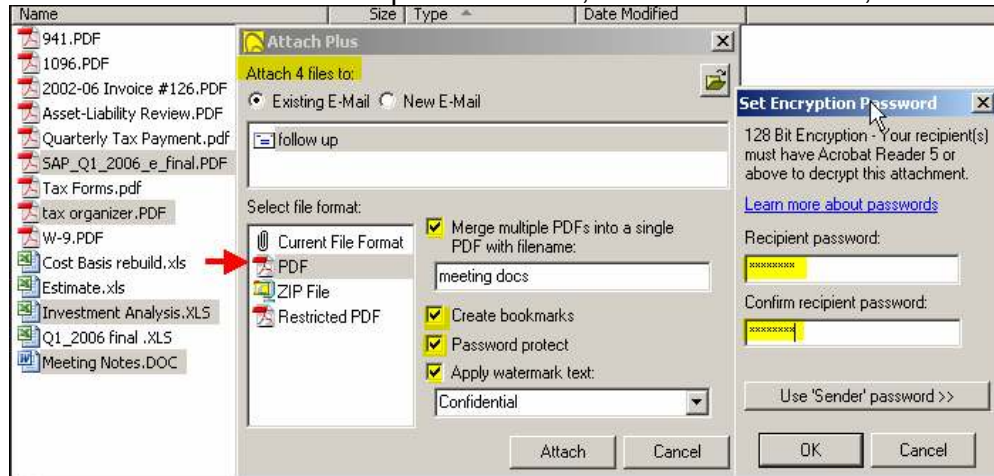
Learn how digital document management helps you find files faster, reduce Storage space costs and improves information security.



[View Video](#)

Attach Plus

Attach Plus is a very inexpensive product with a lot of functionality. For as little as \$49/user one time cost, you can encrypt and password protect emails, create Bookmarked PDFs with multiple documents, convert docs to PDF, Watermark



documents and it can be used within Laserfiche or outside.



[CLICK TO VIEW QUICK DEMO](#)

[View Demo](#)

Surety is one of ECS' newest business partners. ECS now offers this service to authenticate your Laserfiche data enabling you to prove that your electronic intellectual property, legal documents, financial records and/or contracts have never been altered or inadvertently tampered once scanned.

Legally Authenticate Electronic Documents for as Little as \$50/User/Year

It takes skill to forge a paper signature but altering an electronic document, image or email takes nothing more than motive and a keystroke.

Companies of all sizes can use Surety's AbsoluteProof to safeguard important electronic business records against tampering and alteration to prove regulatory compliance, protect valuable intellectual property and ensure litigation readiness

Kofax VRS Video



[fi-5650C Product Video](#)

[fi-5750C Product Video](#)

[fi-5900C Product Video](#)

Fujitsu Scanners and Kofax VRS Product Videos

Click on the picture below to be taken to the self running video.



5650c



5750c



5900c

Tech Tips

TOP



Power Up and Get Connected.

Visit the Laserfiche Support and User Information Site

[Getting Ready for Version 8](#)

[Laserfiche 8.0.1 Delivers More Administrative Tools](#)

[Web Access 8 Allows Simultaneous Multiple File Import](#)

[Tailor Your Recycle Bin to Suit Your Needs](#)



Laserfiche 8



Determining Which Computer a User is Logged In From

In the Connections node, you can now determine which computer a user is logging in from. This can be useful in troubleshooting situations—for instance, you believe you have a duplicate user, or a user who is not being logged off properly, and want to know where the 'extra' user is logging in from. It can also be useful if you are afraid that a user's password has been compromised and want to track where the Laserfiche trustee is logging in from.

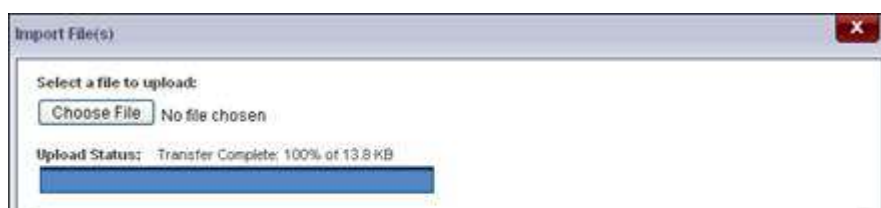
To determine which computer a trustee is logging in from, open the Administration Console and select your server. Select the Connections node. The computer that a user is logging in on to access the repository will be listed in the Computer column.

Web Access 8 Allows Simultaneous Multiple File Import

Web Access 8 now offers the ability to import multiple files at once by selecting files from a computer and uploading them to a temporary holding area until you are ready to import. Getting documents into a Laserfiche repository as quickly and efficiently as possible is key in utilizing the full functionality of Laserfiche. In the previous version of Web Access, users were able to import files from their computer one at a time into their repository.

To import multiple files into a repository:

1. Select the Laserfiche folder to import files into.
2. Select **Import** from the **File** menu.
3. Click **Choose File** and select the file you want to import. This adds the file to the temporary holding location. You will see the file in the **Files to import** section.
4. Repeat step 2 until all the files you want to import are listed in the **Files to import** section.
5. If you accidentally add a file you do not want to import, click **Remove** to the right of the file.
6. When finished, select **Start Import**.
7. All files in the **Files to Import** list will be imported into Web Access.



Laserfiche Administration Console help files.

[Top of Tech Tips](#)

About ECS

TOP

Contact Info

877.790.1600

Web: www.ecsimaging.com

Sales Inquiry:

sales@ecsimaging.com

Tech Support:

support@ecsimaging.com

Locations

Southern CA

3720 Sunnyside Dr. Ste.200

Riverside, CA 92506

Tel: 951.787.8768

Fax: 951.787.0831

Northern CA

4737 Imhoff Pl Unit 1B

Martinez, CA 94553

Tel: 925.370.2456

Our Services

- Scanning Services
- Microfiche/Film/Aperture Card Conversions
- Digital Signatures
- Hosted WebLink
- Custom Programs: Case# Generator, Mug Shot Capture, Six-Pack Creator
- ECS Integration Library Tool
- Custom Integrations:
 - ESRI, Permits Plus, CRW, H.T.E., Navision, Eden, Munis, Oracle, DataTel, PeopleSoft, Digital Recorder Importer
- Turn-key Implementations

Our Business Partners

Software



Document Management Software

Laserfiche Integrations



Agenda Manager Integration



ESRI Integrations



Digital Signatures



Email & Data Encryption



Sealed Data Authentication



Court Case Management Integration

Scanning Technologies



Kofax Virtual ReScan Software



Elite Channel Partner



Premier Partner



Authorized Partner



E-size/Map Scanners



Advanced Capture Solution
ICR & Forms Processing



Check Scanning & Remittance
processing Integration

This newsletter is emailed exclusively to ECS Imaging, Inc. customers only.
If you do not wish to receive an email copy, just reply to this email to let us know.
We also post a copy on our website http://www.ecsimaging.com/news_newsletters.php.